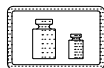
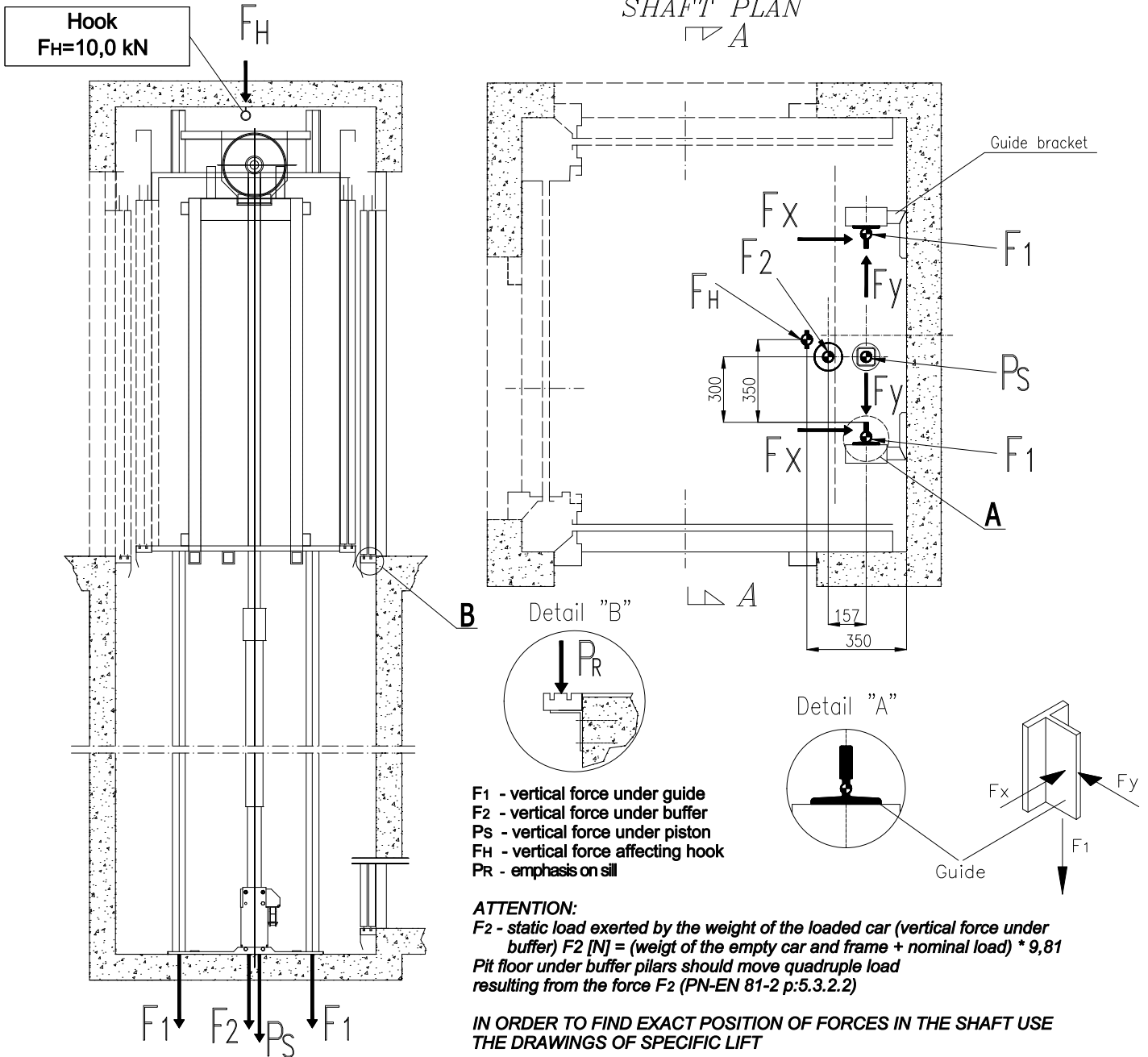


FORCES ON PIT FLOOR

Payload [kg]	F_x [kN]		F_y [kN]		Vertical force under guide F_1 [kN]		Vertical force under buffer F_2 [kN]		Vertical force under piston P_s [kN]		Emphasis on sill P_R [kN]
	1 entrance	2 entrances	1 entrance	2 entrances	1 entrance	2 entrances	1 entrance	2 entrances	1 entrance	2 entrances	
250	3,1	3,2	0,5	0,16	9,6	9,9	5,8	6,5	12,6	13,8	1,0
300-350	4,0	4,2	0,65	0,25	12,5	12,9	7,5	8,6	16,4	17,9	1,4
400	5,1	5,3	0,8	0,3	15,4	15,9	9,2	10,4	20,2	22,0	1,6

SHAFT SECTION A-A ↷

SHAFT PLAN
↙ A



Name: CONSTRUCTION DIRECTIVES

Description: Forces on Pit floor
HOME LIFT 250-400 kg

Change	Date	Description		
		No. of catalogue: 4-1	No. of drawing: GMV.HL.250-400.S	Date version: 24.05.2016
	22.09.2011			Version: 2.4

